

# HOUSI BROOKLIN



# LOCALIZAÇÃO



**R. GETÚLIO DA ROCHA SOARES, 135**

## GERADORES DE DEMANDA

**ESTAÇÃO BROOKLIN(LINHA LILÁS):350 m.**

**UNIP CHÁCARA STO ANTÔNIO: 800 m.**

**CONSULADO GERAL DOS EUA: 1,3 Km.**

**AV. ROQUE PETRONI: 600 m.**

**SHOPPING PARQUE DA CIDADE: 2,6 Km.**

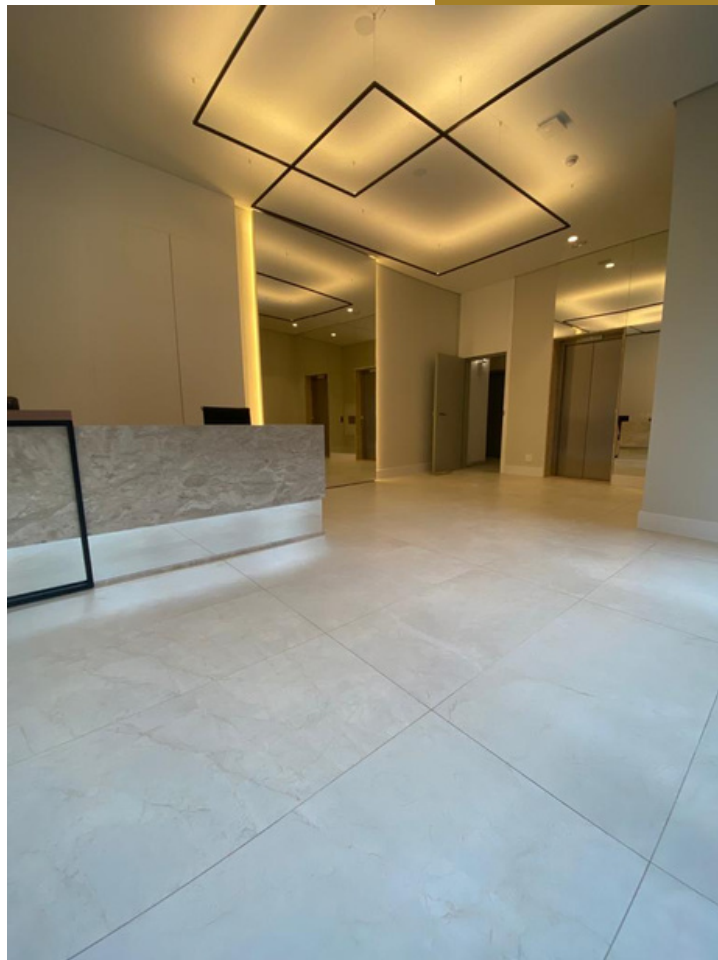
**SHOPPING MARKET PLACE: 2 Km.**

**UNIVERSIDADE ANHEMBI MORUMBI: 600 m.**

**AEROPORTO DE CONGONHAS: 4,5 Km.**

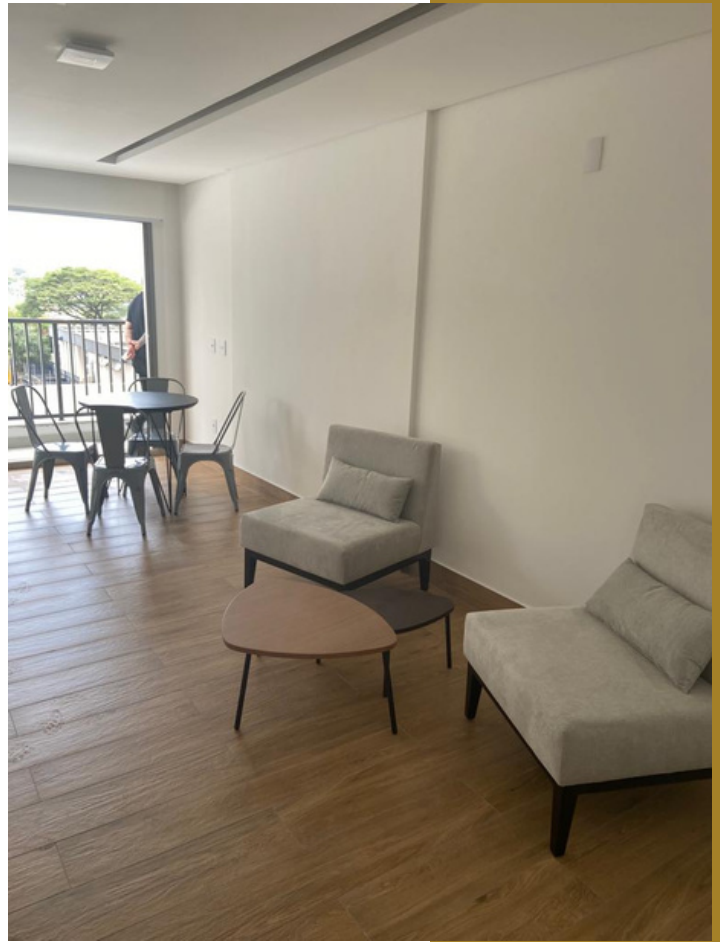
**AV. ENGENHEIRO LUÍS CARLOS BERRINI: 3,7 Km**

# IMAGENS LOBBY

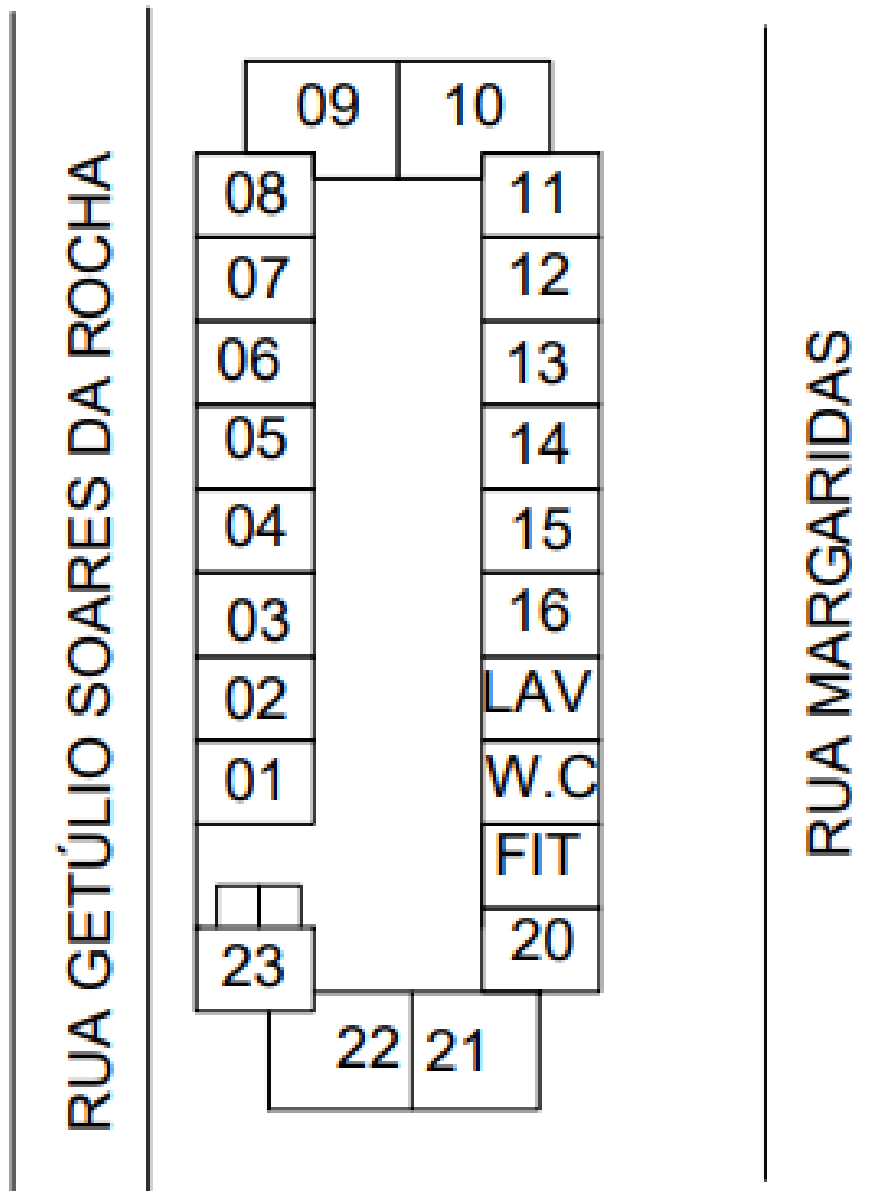
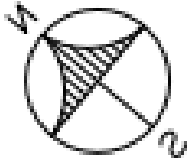




# LAVANDERIA E FITNESS

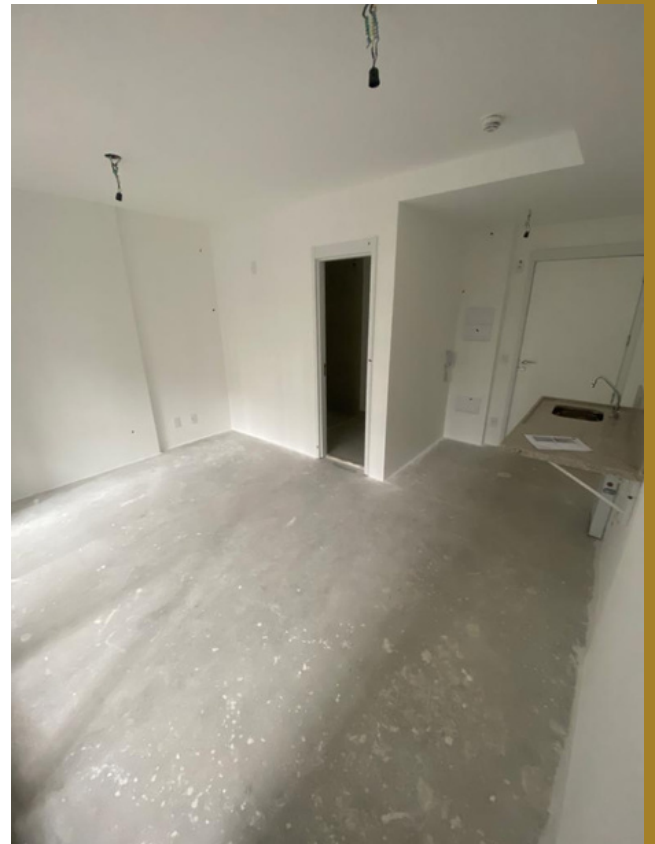
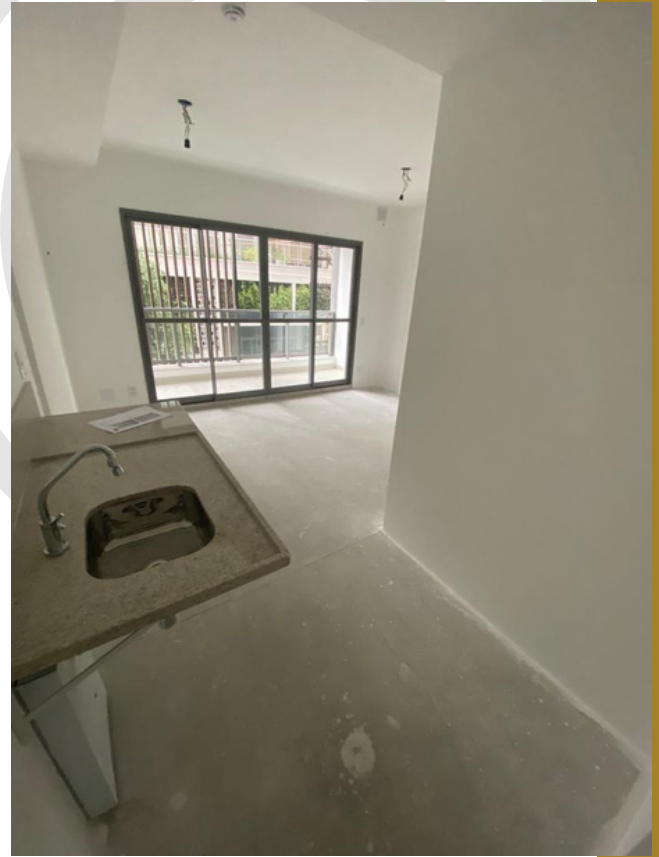
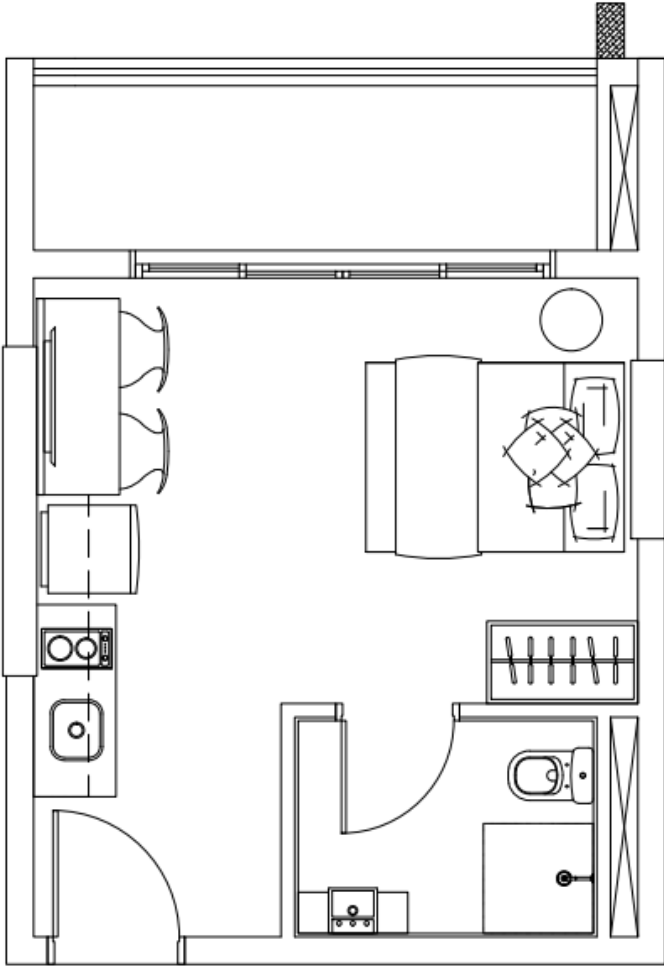


# IMPLANTAÇÃO 2º PAVIMENTO



# STUDIO 28,75M<sup>2</sup>

## FINAL 6



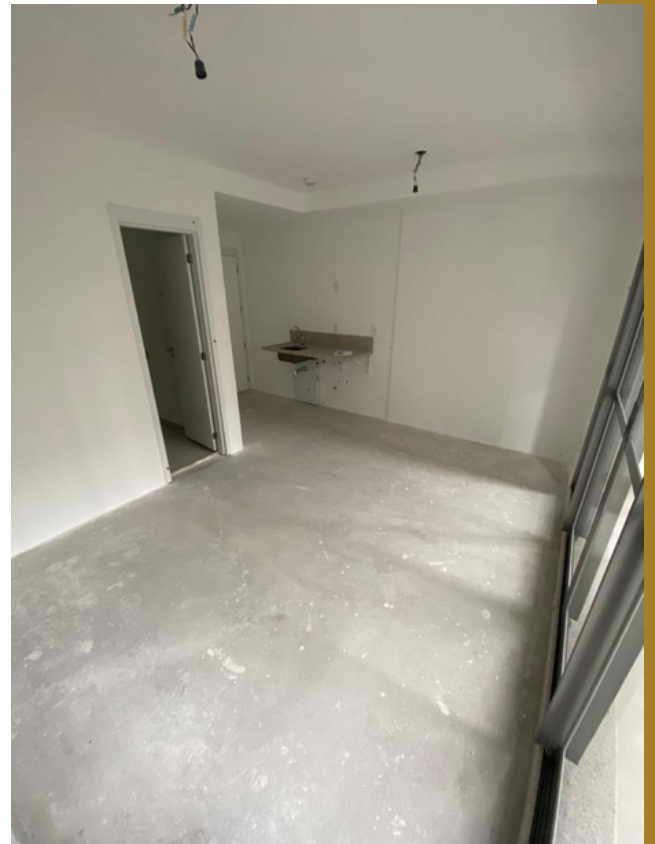
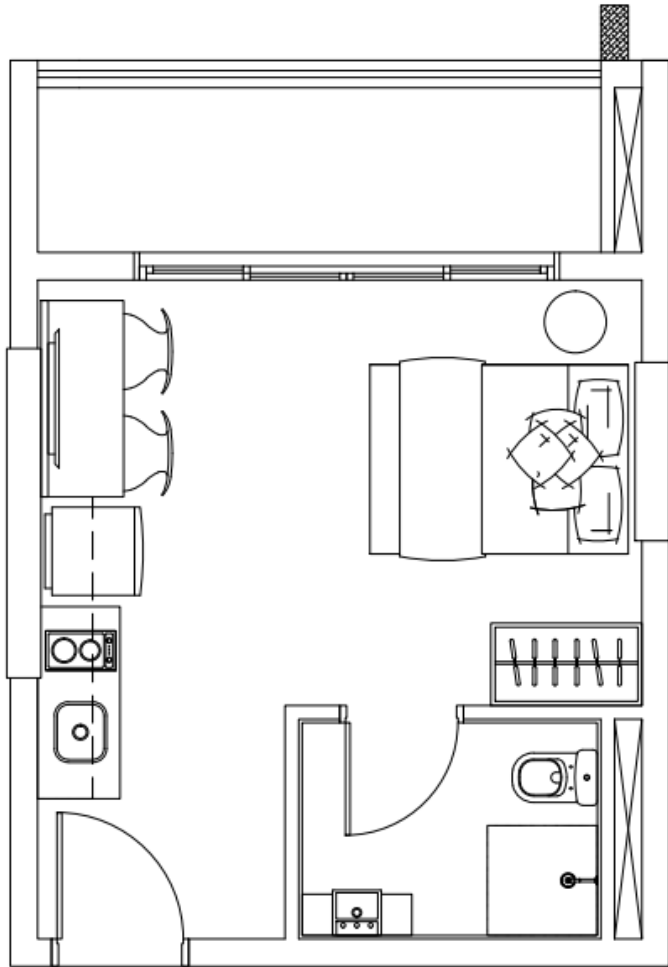
**VITACON**  
LIFE IS ON

\*MATERIAL NÃO OFICIAL



# STUDIO 29,80M<sup>2</sup>

## FINAL 2

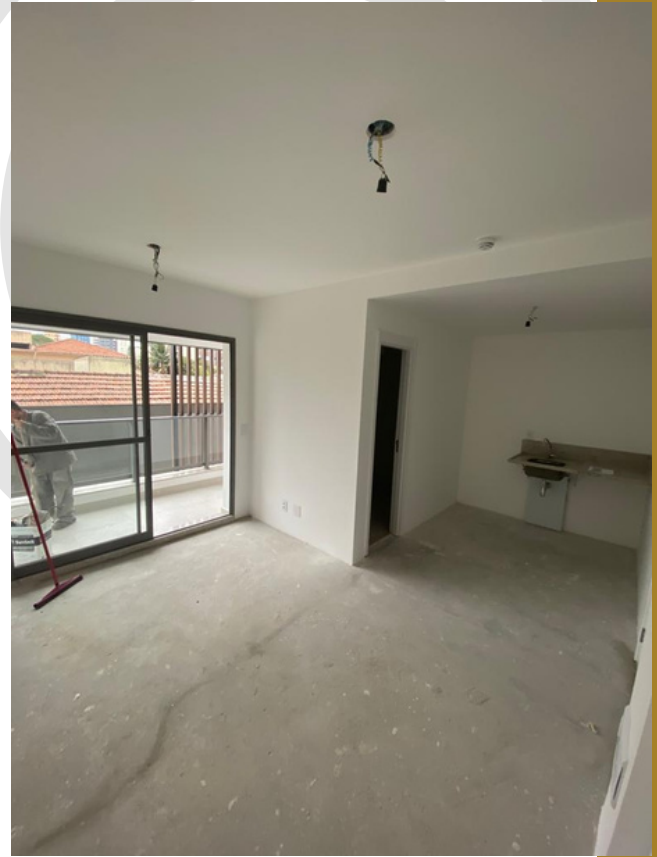
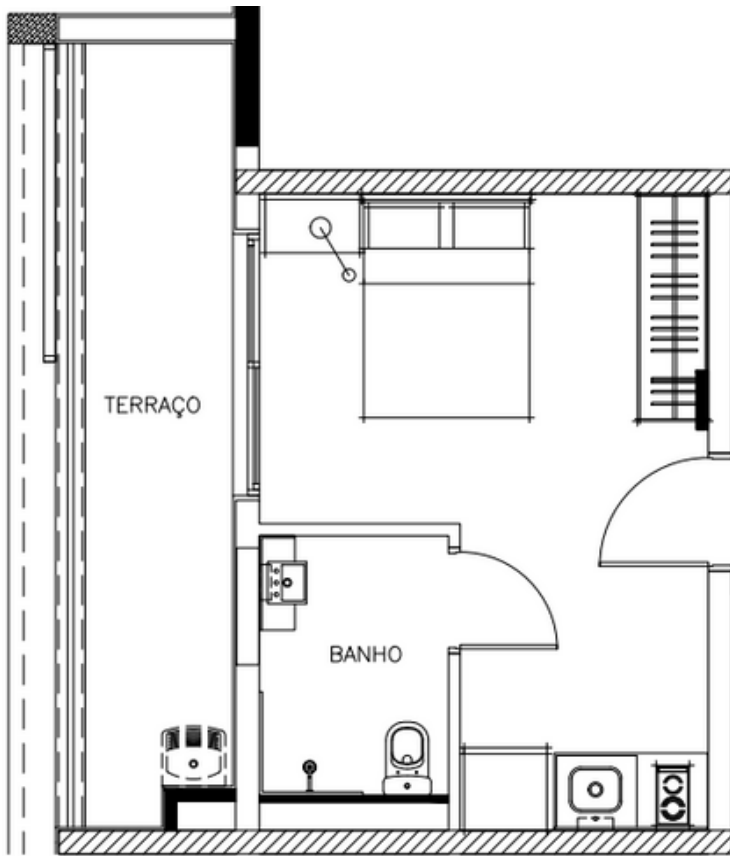


**VITACON**  
LIFE IS ON

\*MATERIAL NÃO OFICIAL

# STUDIO 33,63M<sup>2</sup>

## FINAIS 9 E 10



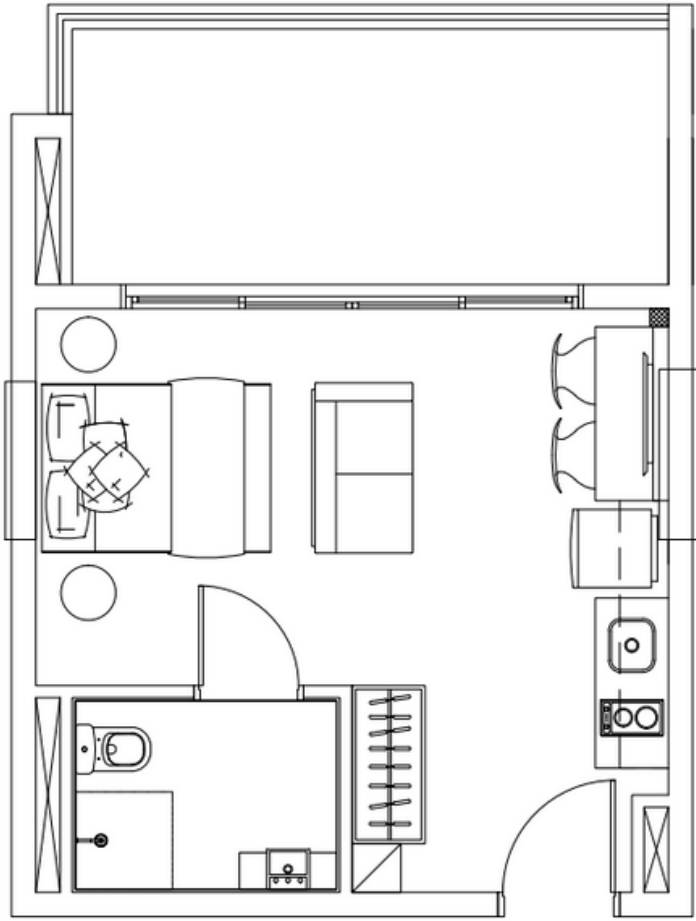
**VITACON**  
LIFE IS ON

\*MATERIAL NÃO OFICIAL



# STUDIO 39,62M<sup>2</sup>

## FINAL 15



**VITACON**  
LIFE IS ON

\*MATERIAL NÃO OFICIAL